

13th UIC Sustainability Conference



Railways and Livable Cities

*Günter Steinbauer, CEO
Wiener Linien GmbH & Co KG*

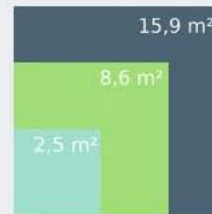
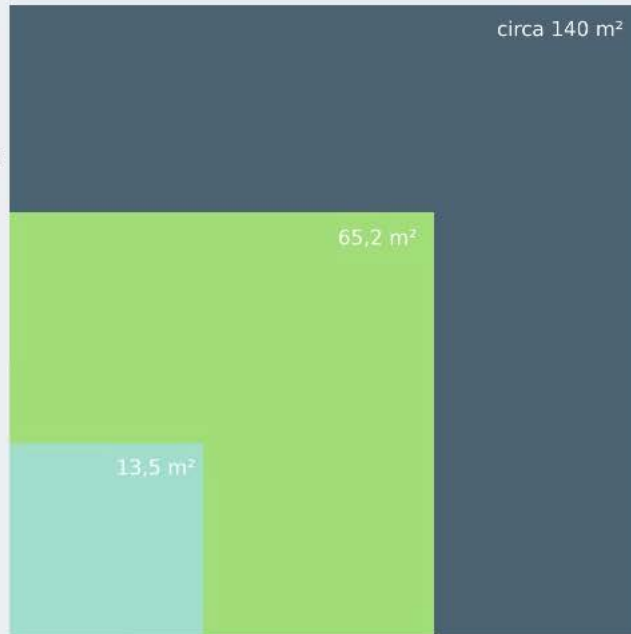


12, 13, 14 October 2016

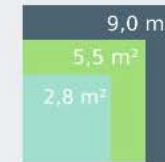
Use of Urban Space



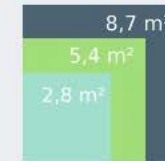
mit 1,4
Personen
besetzt



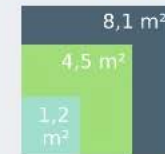
20 %
besetzt



Straßenbahn /
Tram
20% besetzt



Stadtbahn /
Light Rail
20% besetzt



40 %
besetzt



max.
4 km/h



Stillstand



30 km/h



50 km/h

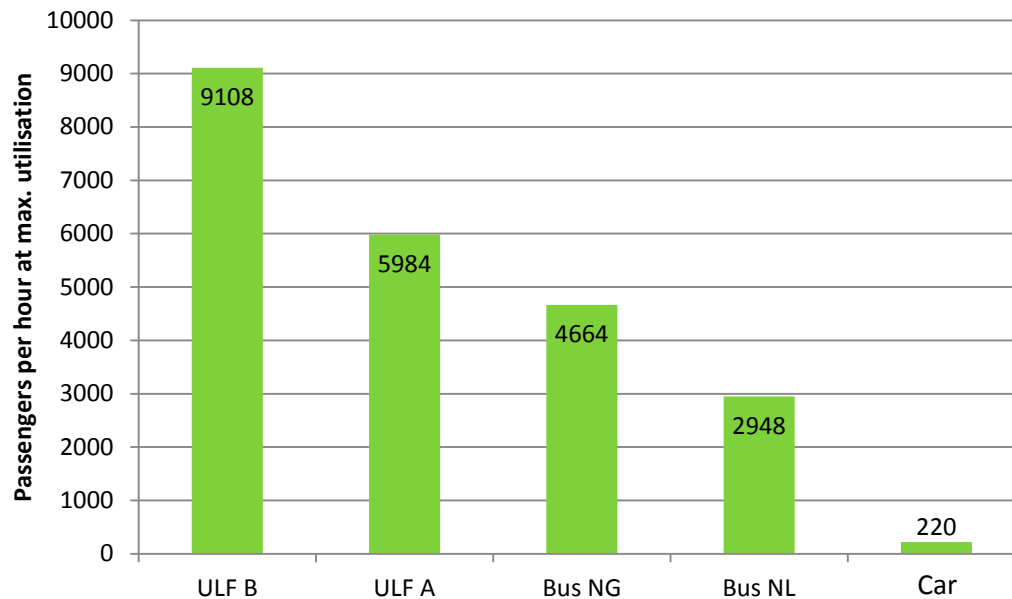
Image adapted from © www.zukunft-mobilitaet.net
<http://www.zukunft-mobilitaet.net/78246/analyse/flaechenbedarf-pkw-fahrrad-bus-strassenbahn-stadtbahn-fussgaenger-metro-bremsverzoeigerung-vergleich/>, 07.10.2016



Capacity Comparison



**Capacity of Different Modes of Transport
At 44 Vehicles per hour**



© 2015 Bildstrecke.at



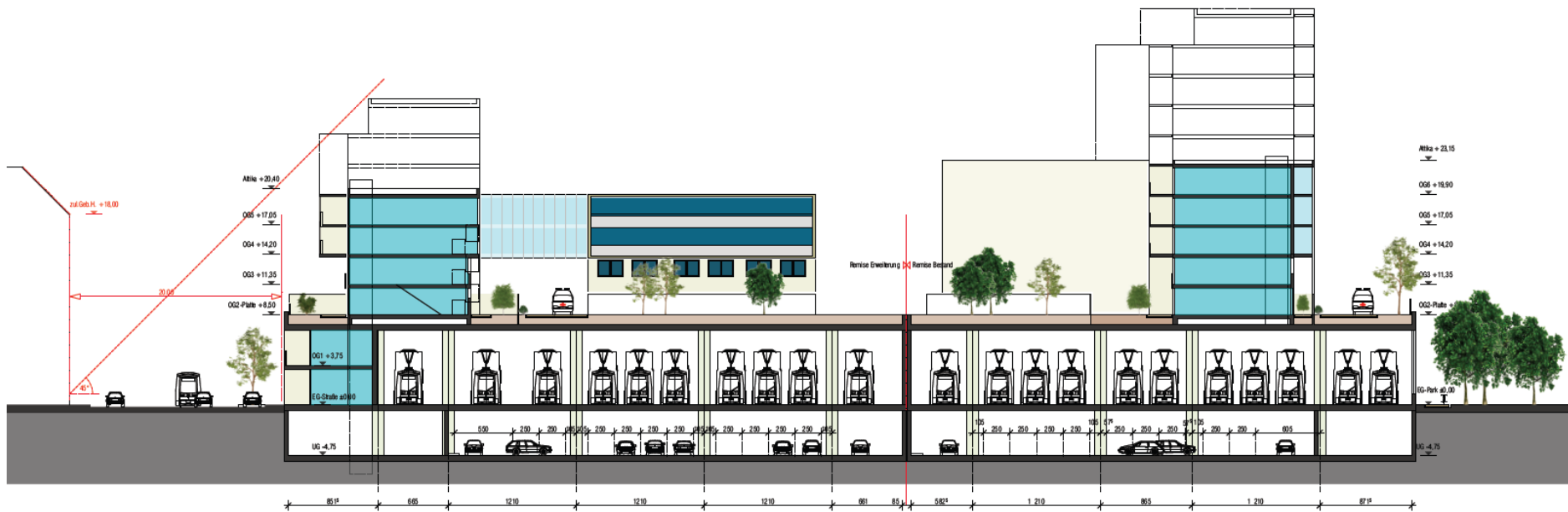
Development Depot Kagrán



© 2016 Wiener Linien



Development Depot Kagran



© 2016 Wiener Linien



Development Depot Kargan



© 2016 Wiener Linien



E-Bus



© 2015 Bildstrecke.at



Self-Driving Future Bus



© <https://blog.daimler.de/2016/07/20/weltpremiere-future-bus-unser-baby-faehrt-alleine/>, 07.10.2016



© <https://www.daimler.com/innovation/autonomes-fahren/future-bus.html>, 07.10.2016

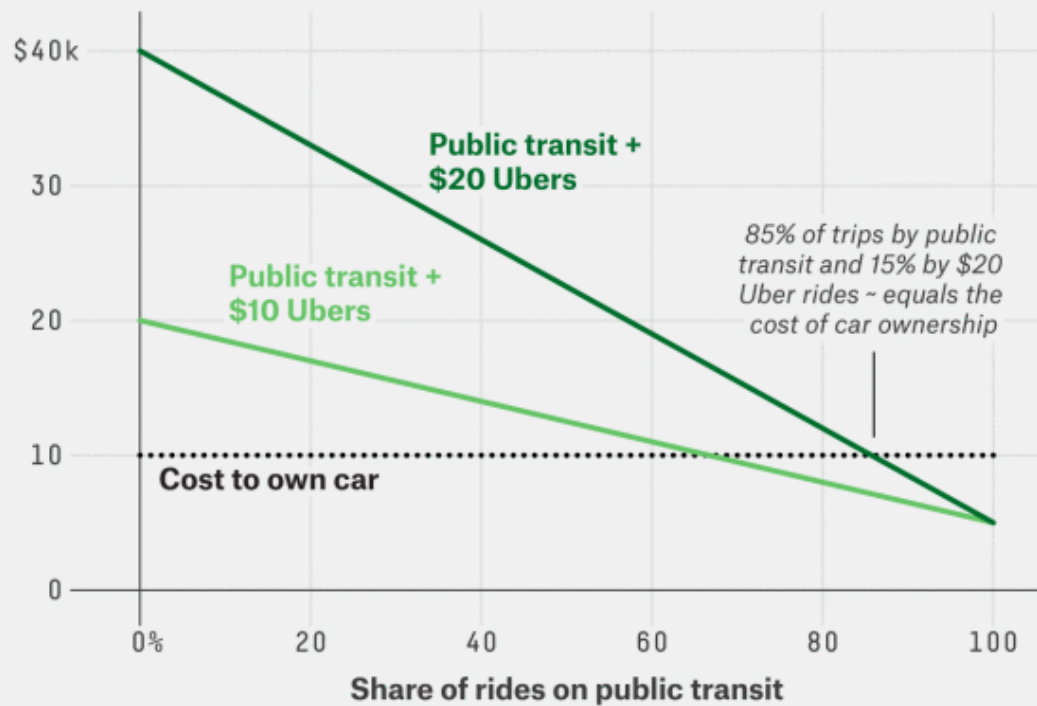


Learning from other sectors?



Uber Can Be Cheaper Than Car Ownership — If You Mostly Use Public Transit

Estimated annual cost of transportation by household, given share of trips that are taken on public transit



FIVETHIRTYEIGHT

<http://fivethirtyeight.com/features/public-transit-should-be-ubers-new-best-friend/>,
07.10.2016

