

# 12<sup>th</sup> UIC Sustainability Conference



## The EU Political Context

The Commission's strategy and CER's activity

VOLPI, Ilja Lorenzo  
Policy Adviser, CER



# The EU political context



White Paper on adaptation to climate change  
**no focus on transport**

Transport White Paper  
**Increase rail market share**  
(over >300 Km)

2009

2010

2011

2012

2013

Parliament report on adaptation  
**Transport as a key part of the future adaptation strategy**

EU climate change adaptation strategy  
**What role for the rail sector?**



Big opportunity— general political support for rail as a key player in making transport more sustainable and resilient

# The EU political context



## Cohesion Policy

- Pursue the allocation of 20% of the budget for climate expenditure
- Require that investments are climate proofed

## CEF/TEN-T

- Up to 10% co-financing rate for actions enhancing resilience & mitigation
- Infrastructure investments to promote climate resilience

## Horizon 2020

- 35% climate-related expenditure
- adaptation as a key priority

**EU budget 2014-2020**

**Adaptation is already part of the EU policy**

# The 2013 EU strategy

What are we expecting?



## Facilitation and coordination

- promote national adaptation actions plans (mandatory? EU guidelines?)
- facilitate cooperation across local authorities

### Mainstreaming

TEN-T priority projects/Cohesion policy

-TSIs/ERA to integrate climate change adaptation

Horizon 2020/LIFE

### Enhance knowledge

Coordinate research efforts

Assess adaptation costs

ERA: info/dissemination

### Standards & guidelines

Promote standards e.g. infrastructure investment

Guidelines for project managers or implementation of a specific policy

# CER activity - advocacy



## Actively support and feed into the EU strategy

EU Steering Group

CER-UIC ad-hoc working group

dedicated sectoral workshop April 2012

Lead on standardisation and climate change



## Next steps

Sector's vision on climate change adaptation

Sector's position paper on standardisation

II workshop in April 2013 to be co-organised with the Commission



Pro-active engagement with EU institutions is key. Risk is that the focus remains on other transport modes!

# CER activity - standardisation



## Increased cooperation with the Commission

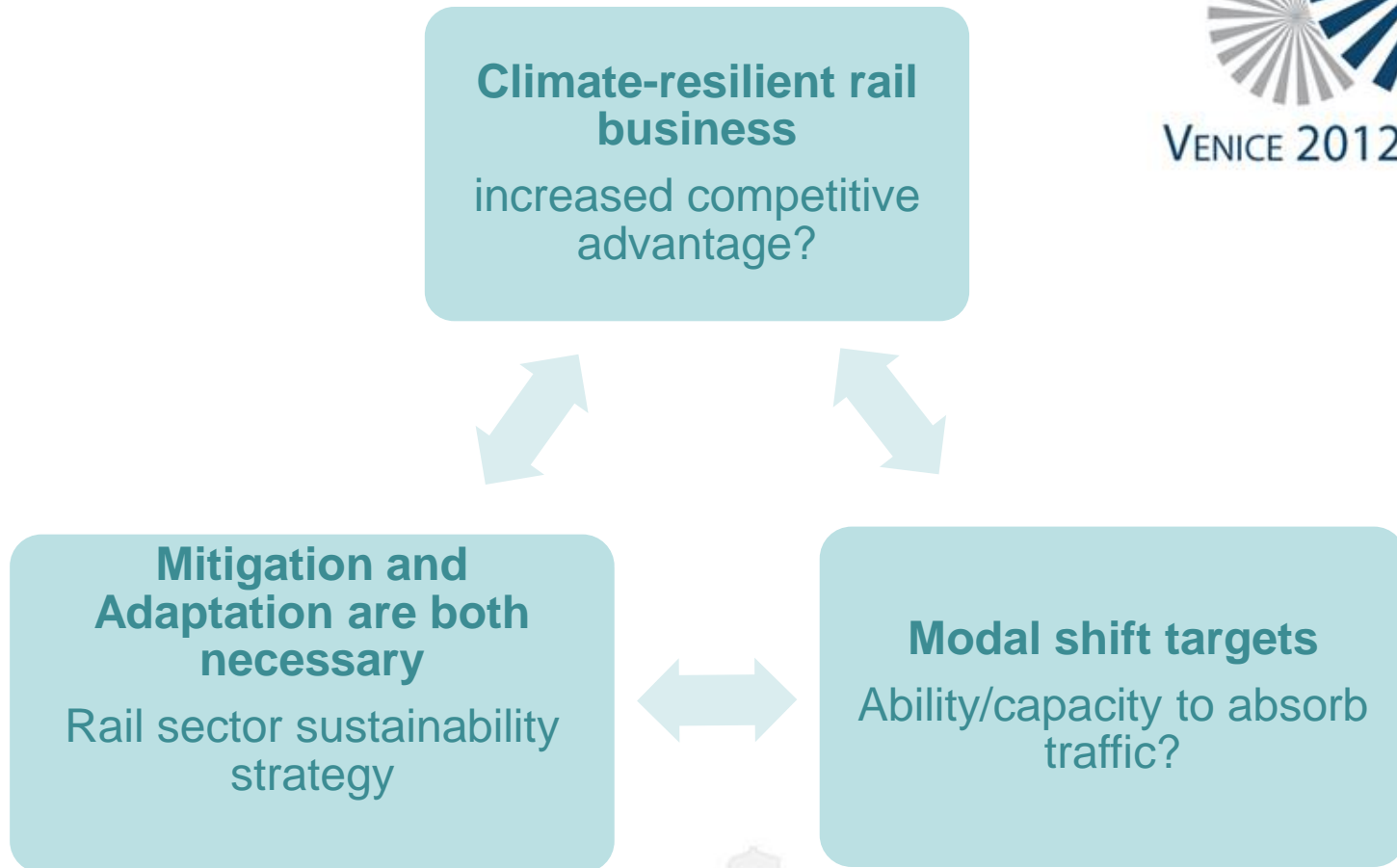
- **EU Workshop on “Climate Change & Standards”**  
In response a previous CER Position Paper submitted
- **Sector Workshop on “Climate Change & Standards”**  
preparation of a rail sector position paper (CER, UNIFE, EIM, CEN/CENELEC)



## Position Paper’s Main Messages

- **No changes in the present regulatory framework** are necessary to deal with foreseeable climate changes
- A robust European railway systems requires **R&D activities**
- Identification of standards and the **impact** of any changes should be **assessed carefully beforehand**
- Encourage member states to build a more resilient railway system for the future

# EU strategy: opportunities for rail



All in all, aim at having rail transport at the heart of the adaptation agenda of the EU





Thank you for your attention!

VOLPI, Ilja Lorenzo  
Policy Adviser, CER

