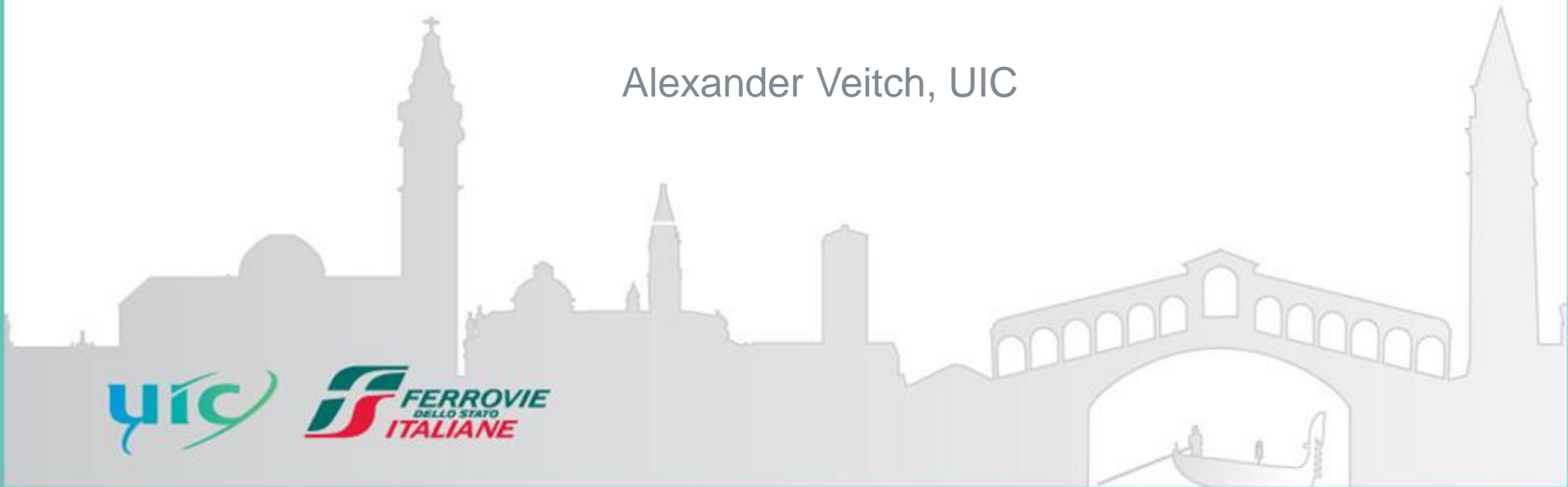


12th UIC Sustainability Conference



Multi-Modal Transport : Examples from Railways Worldwide

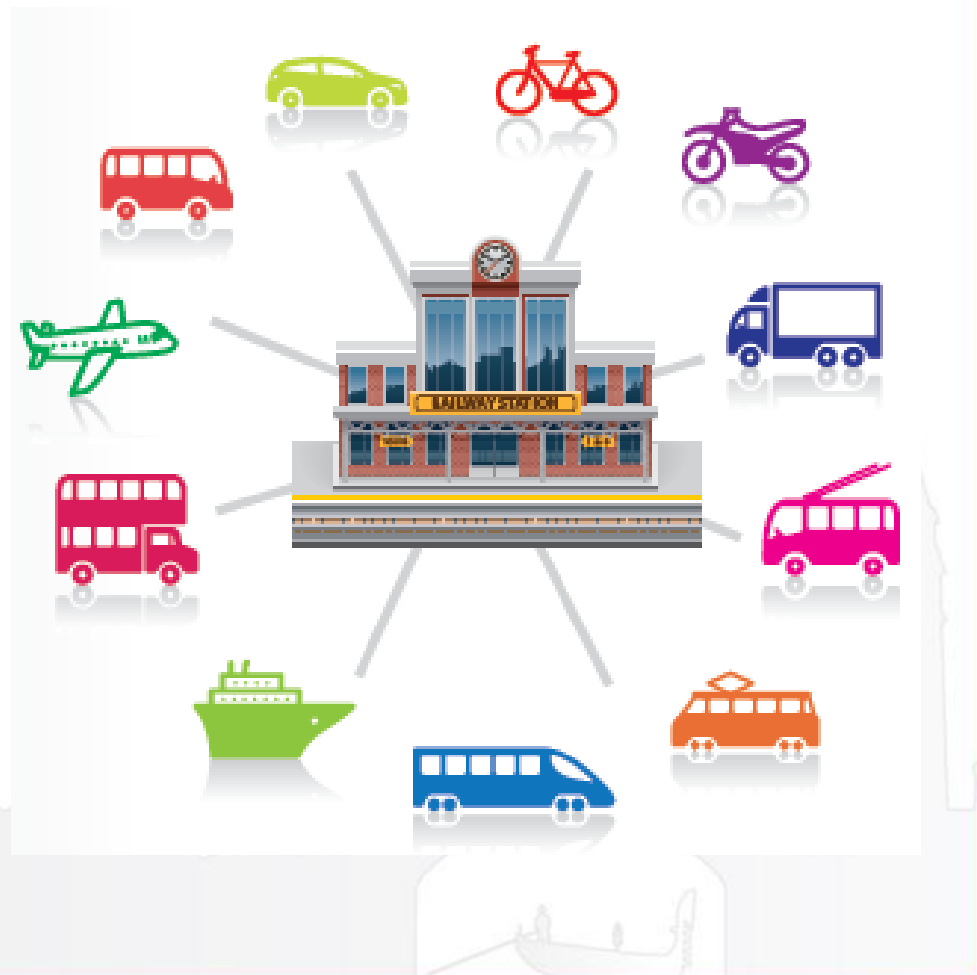
Alexander Veitch, UIC



Integrated Transport



- The railway sector is taking a lead in offering door-to-door options for customers, providing an alternative to the door convenience of the car.



Integrated Ticketing



| | | | |
|------------|---|--|-----------------------------------|
| Plane | Depart: 7:30 a.m. Mon., May. 2, 2011 Portland, OR (PDX) | Arrive: 3:40 p.m. Mon., May. 2, 2011 New York/Newark, NJ (EWR - Liberty) | Flight Time: 5 hr 10 mn |
| | Change Planes. Connect time in New York/Newark, NJ (EWR - Liberty) is 1 hour 18 minutes. | | |
| Train | Depart: 4:58 p.m. Mon., May. 2, 2011 New York/Newark, NJ (EWR - Liberty) | Arrive: 6:24 p.m. Mon., May. 2, 2011 Stamford Rail Station, CT (ZTF) | Flight Time: 1 hr 26 mn |
| | | | Travel Time: 7 hr 54 mn |
| One Ticket | Flight CO 9419 is operated by AMTRAK TRAIN 94. Check in at the Amtrak Quik-Trak Self-Service Machine for Continental flight 9419 operated by Amtrak. | | |

Railways work with partners to provide seamless ticketing

Cycle – Rail integration



Railways are improving integration with bicycles, particularly at stations

Train – Car Combination



Railways work
with car rental
companies and
electric cars



UN SERVICE
PEUT EN CACHER
UN AUTRE.
SERVICE TRAIN + AVIS.



TRAIN+AVIS

Des avantages exclusifs pour tous les clients SNCF.

Freight Connections



Intermodal transport is key to freight transport by rail

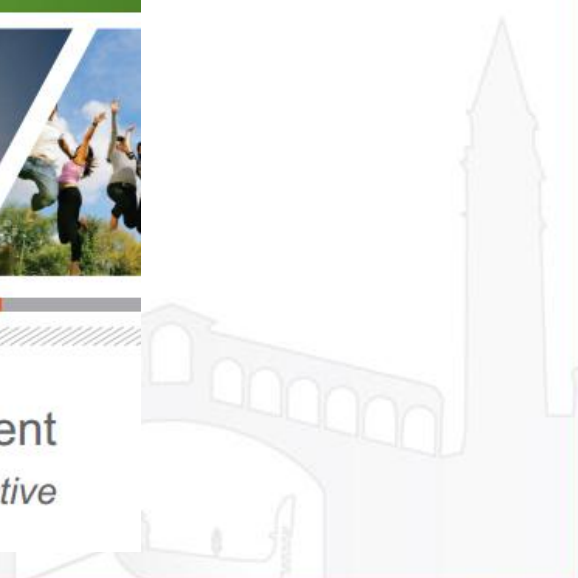


More Examples...



Railways and Sustainable Development

A global perspective





- Thank you for your kind attention
- Contact us: sustainability@uic.org

