

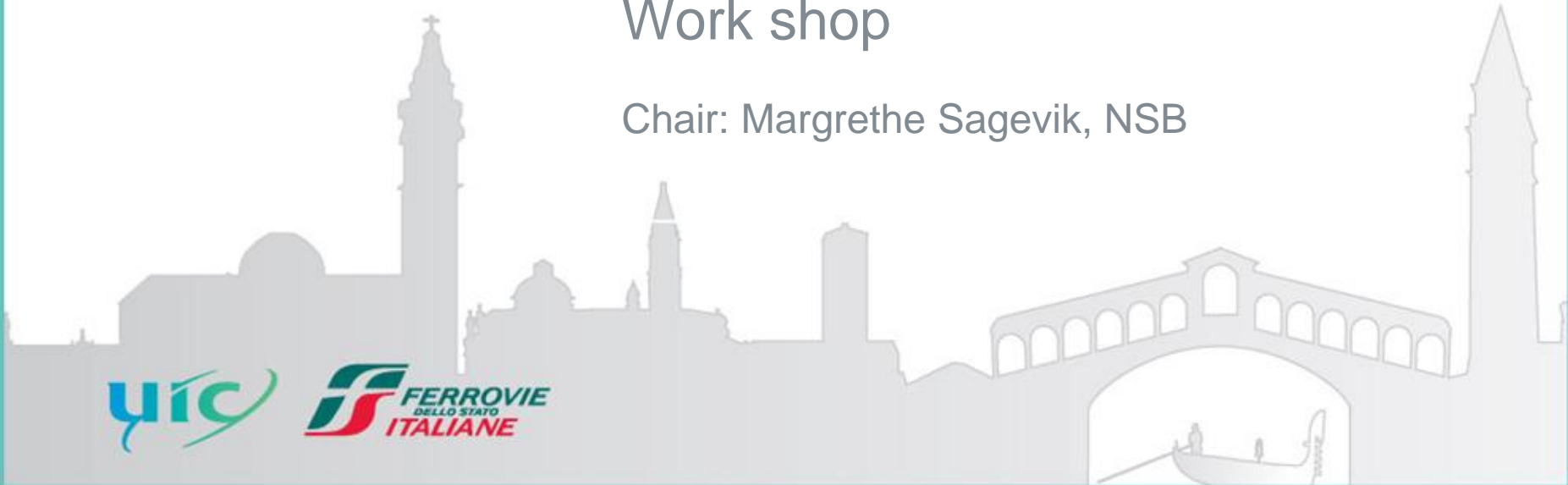
12th UIC Sustainability Conference



Sustainable Mobility

Work shop

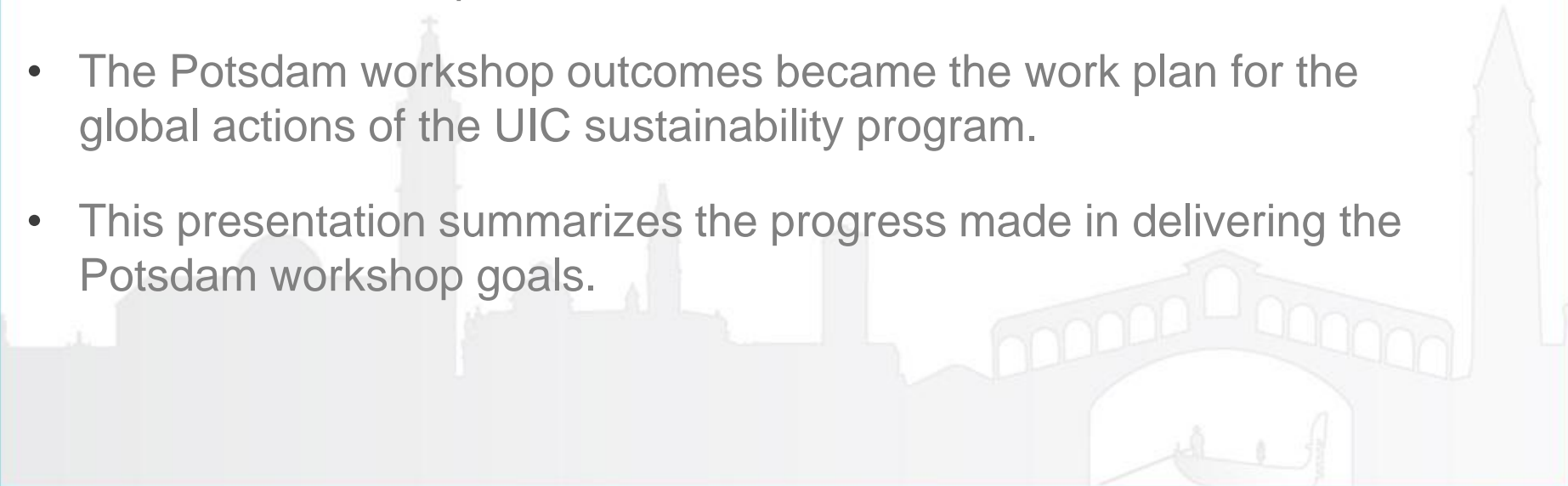
Chair: Margrethe Sagevik, NSB



Workplan: From Madrid to Venice via Potsdam



- The 2010 UIC Sustainability Conference in Madrid asked members to help develop the work plan for UIC actions at the global level
- This was followed by the Potsdam Workshop in October 2010 which brought together key external stakeholders to discuss rail and sustainable development.
- The Potsdam workshop outcomes became the work plan for the global actions of the UIC sustainability program.
- This presentation summarizes the progress made in delivering the Potsdam workshop goals.



Conclusions



- Continue the cooperation with UN
 - ➔ make the long walk through the institutions
- Focus from climate change towards sustainable development
- Bring transport into & join the sustainable development discussions – globally
 - ➔ organise regional UIC Sustainability conferences, ex with Chinese and Indian Railways

Conclusions



- Be involved – be updated on the processes and procedures, ex
 - UN Habitat 2016 with official stakeholder process starting in 2014
 - Land-locked countries, join early, in 2014
- Bring the Declaration and the indicators and quantitative targets
- Remember one country, one vote

Conclusions



- Share the systematic approach – the 12 step plan

Overall, progress to implement Potsdam Workshop is good, with the majority of actions either completed or ongoing.

Completed	Ongoing Activities	Not Started
1 – Sustainability Website (2011) 2 – Brochure with Key Messages (2011) 4 - Adjustment and finalizing UIC Reporting Guideline (2012) 5 - UIC Sustainability Report (2012)	7 - UN Cooperation 8 - Build up UIC Network 9 - Attracting Investments into rail 12 - Expansion of UIC Expert Network	3 – Sourcebook – rail in developing countries 6 - Changes to UIC Sustainability Strategy and Support Member Strategy 10 - UIC Support Team 11: Railway Ambassadors 13: Regular Stakeholder Workshops (external review)

Question: Should the remaining tasks be continued?

- Consider starting the yellow and red parts with partners