

12th UIC Sustainability Conference



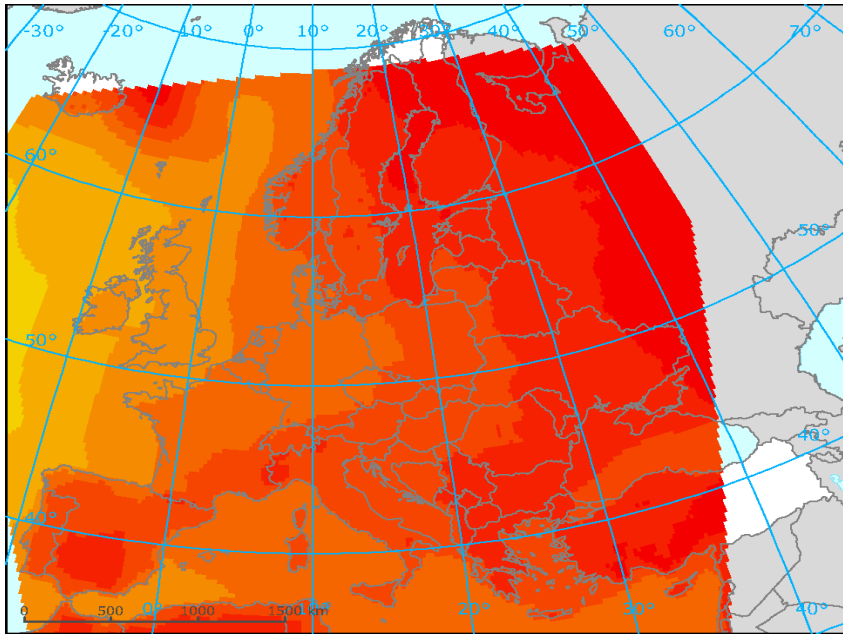
CLIMATE CHANGE ADAPTATION

Parallel Session #2 « HOT TOPICS »

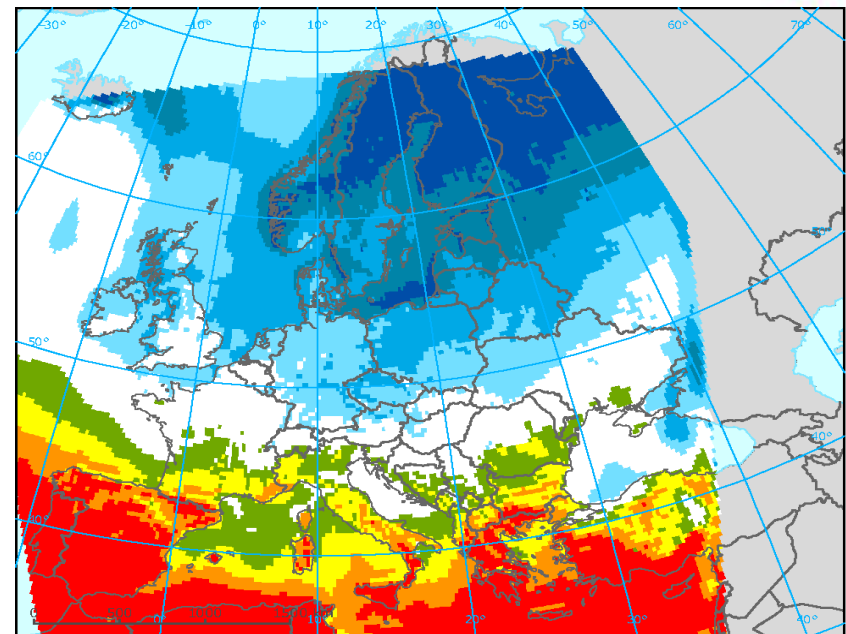
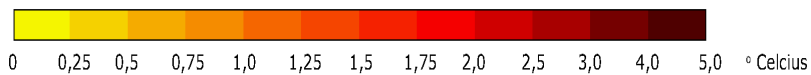
Alexandre KADDOURI,
SNCF, Sustainability Project Manager
Chairman



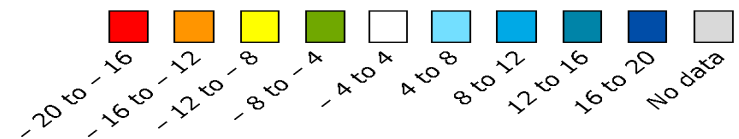
CLIMATE CHANGE ADAPTATION A EUROPEAN HOT TOPIC



Projected changes in annual near-surface temperature 2021-2050



Projected changes in in annual precipitation (%)



CLIMATE CHANGE ADAPTATION A WORLD HOT TOPIC

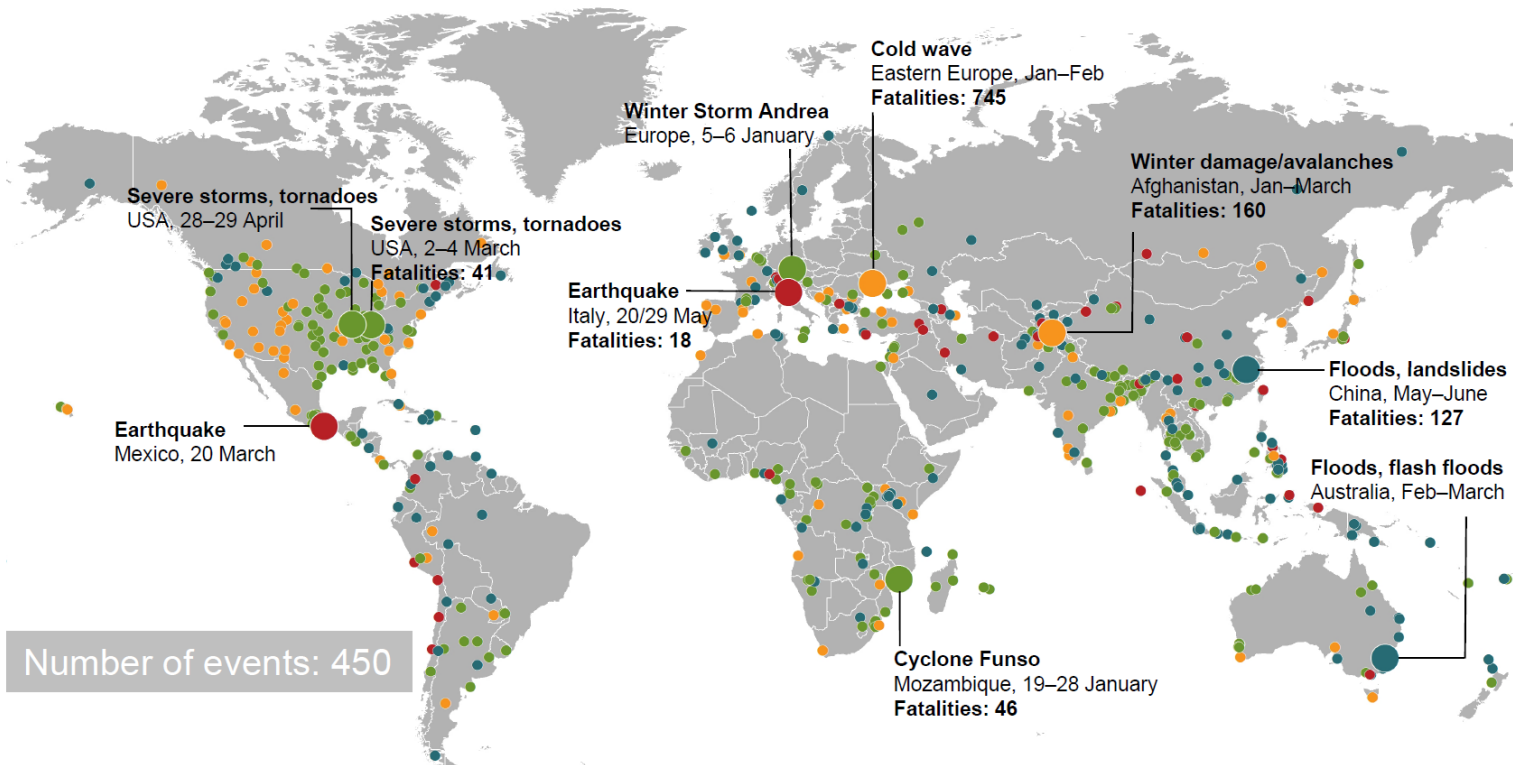
NatCatSERVICE

Natural Catastrophes January – June 2012

World map



Munich RE



Number of events: 450

- Natural catastrophes
- Selection of significant loss events
- Geophysical events (earthquake, tsunami, volcanic activity)
- Meteorological events (storm)
- Hydrological events (flood, mass movement)
- Climatological events (extreme temperature, drought, wildfire)

EXTREME WEATHER EVENTS & ADAPTATION



AGENDA

ITALIAN PERSPECTIVE ON CLIMATE CHANGE ADAPTATION

Gian Piero Pavirani, – Head Maintenance Engineering RFI

VENICE 2012



CLIMATE CHANGE ADAPTATION AND EXTREME WEATHER EVENTS

- **Information and prediction tools – RENFE experience**
Florenci Rey, CEO of Borrasca, Iniciativas Atmosféricas
- **Adaptation research and system approaches in the United Kingdom**
John Dora, UK
- **Snow problems & other natural hazards**
Kazuhiko Aida, East Japan Railway Company
- **Rolling Stocks Adaptation to Climate change**
Veronique Andries, Alstom, UNIFE Sustainable Transport Committee

NEXT STEPS – DEVELOPPING A CLIMATE ADAPATION STRATEGY FOR THE RAIL SECTOR

- **CER vision on climate change adaptation**
Ilja Volpi, CER
- **Discussion: Joint working, European Standards and UIC guidelines**

CONCLUSION FROM THE CHAIR

Alexandre Kaddouri, SNCF

KEY MESSAGES



- **AGENDA FOR EUROPEAN COMMISSION** : Keeping the high priority of establishing the railway sector as the core of a European Sustainable Mobility Strategy
- **SUPPLIERS POINT OF VIEW**: Let's benefit from current experience in all weathers across the globe
- **RAILWAY COMPANIES VOICE** : Technical solutions exist, we need innovations in economic thinking to unlock long term investment in the face of uncertainty

RAILWAYS SOLUTION FOR CLIMATE CHANGE ADAPTATION



READY

RESILIENT

RELIABLE

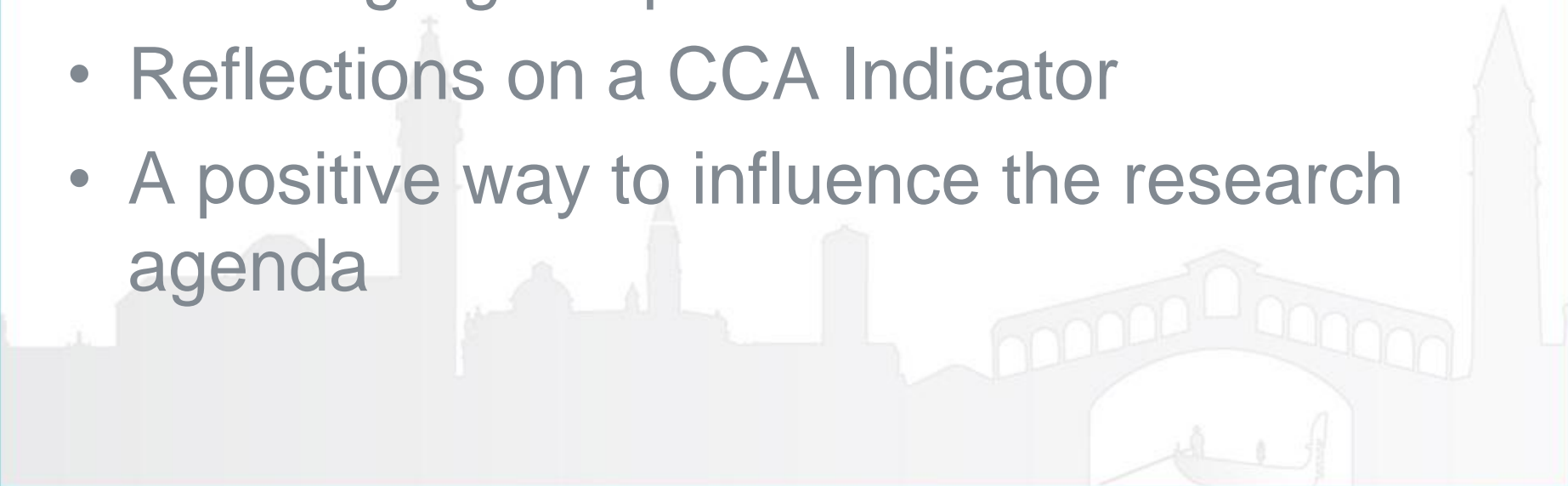
RETROFIT AND
ADAPTABLE

(no) REGRETS

NEXT STEPS



- Development of CCA experts group for UIC/CER
- Proposal for an UIC Guidelines to exchange good practice
- Reflections on a CCA Indicator
- A positive way to influence the research agenda



MORE IDEAS



sustainability@uic.org

